



GE VERNOVA

HITACHI

BWRX-300: HELPING DELIVER LOW-CARBON ELECTRICITY AT SCALE

Michelle Catts, Senior VP, Regulatory Affairs and Licensing

March 2026

© 2026 GE Vernova Hitachi Nuclear Energy Americas LLC. All rights reserved.
GE is a trademark of General Electric Company used under trademark license.
HITACHI is a trademark of Hitachi, Ltd. used under trademark license.

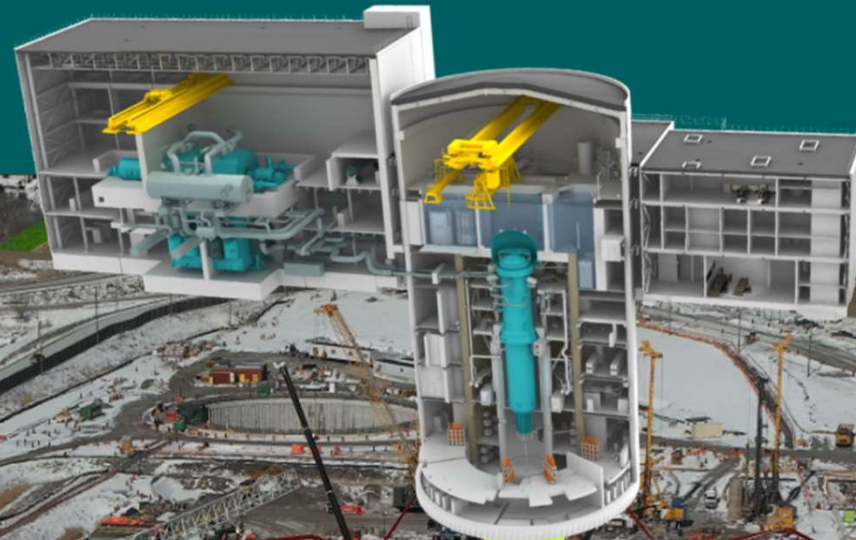


FROM CONCEPT TO CONCRETE



**BWRX
-300**

Proven
Innovative
Simplified



Ontario Power Generation

Darlington New
Nuclear Project

First Western world SMR under construction

Photo courtesy of Ontario Power Generation

© 2026 GE Vernova Hitachi Nuclear Energy Americas LLC. All rights reserved.

Darlington update | BWRX-300 deploying now



Reactor Building Basemat



Reactor pressure vessel components



Reactor building shaft excavation

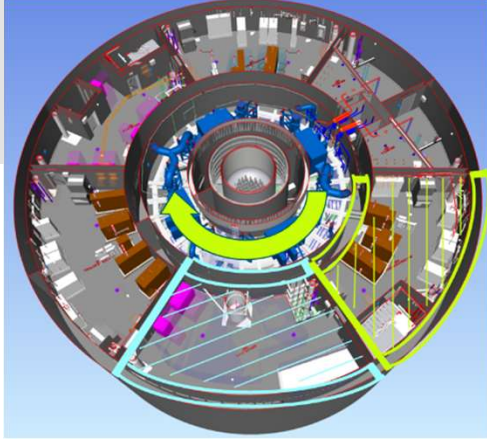
Photo courtesy of Ontario Power Generation

The “Modular” in Small Modular Reactor



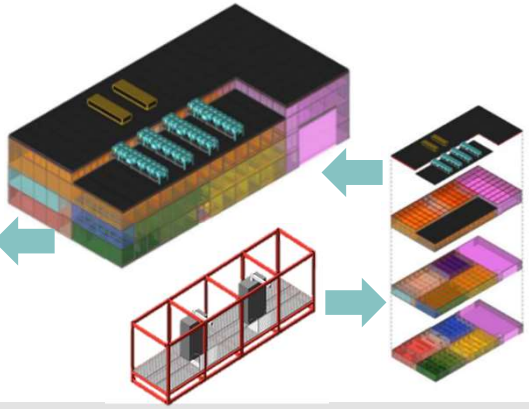
Reactor building

- Diaphragm Steel Plate Composite (DPSC)
- Pre-assembled modular rooms with equipment
- Concrete and finishing after room installed



Control and service building

- Modular and 2D panel construction
- Road-transportable modules without special permit
- Pre-installed and commissioned equipment reduces on-site labor and project variability



Equipment rooms

- Entire room prepackaged for preservation
- Fully insulated and assembled modules

Equipment skids

- Modules with complex piping and equipment
- Fully integrated system for prequalification



Piping modules

- Individual module assembled inside reactor building
- Simplified final assembly process

Modularization coupled with enhanced construction